

# Hampshire Water Transfer and Water Recycling Project

## Design Approach Document – 2 of 3 documents

**VOLUME NUMBER: 5**

**PLANNING INSPECTORATE SCHEME NUMBER: WA010002**

**APPLICATION DOCUMENT REFERENCE: 5.12**

**APFP REGULATION: 5(2)(q)**

May 2026

Version 0

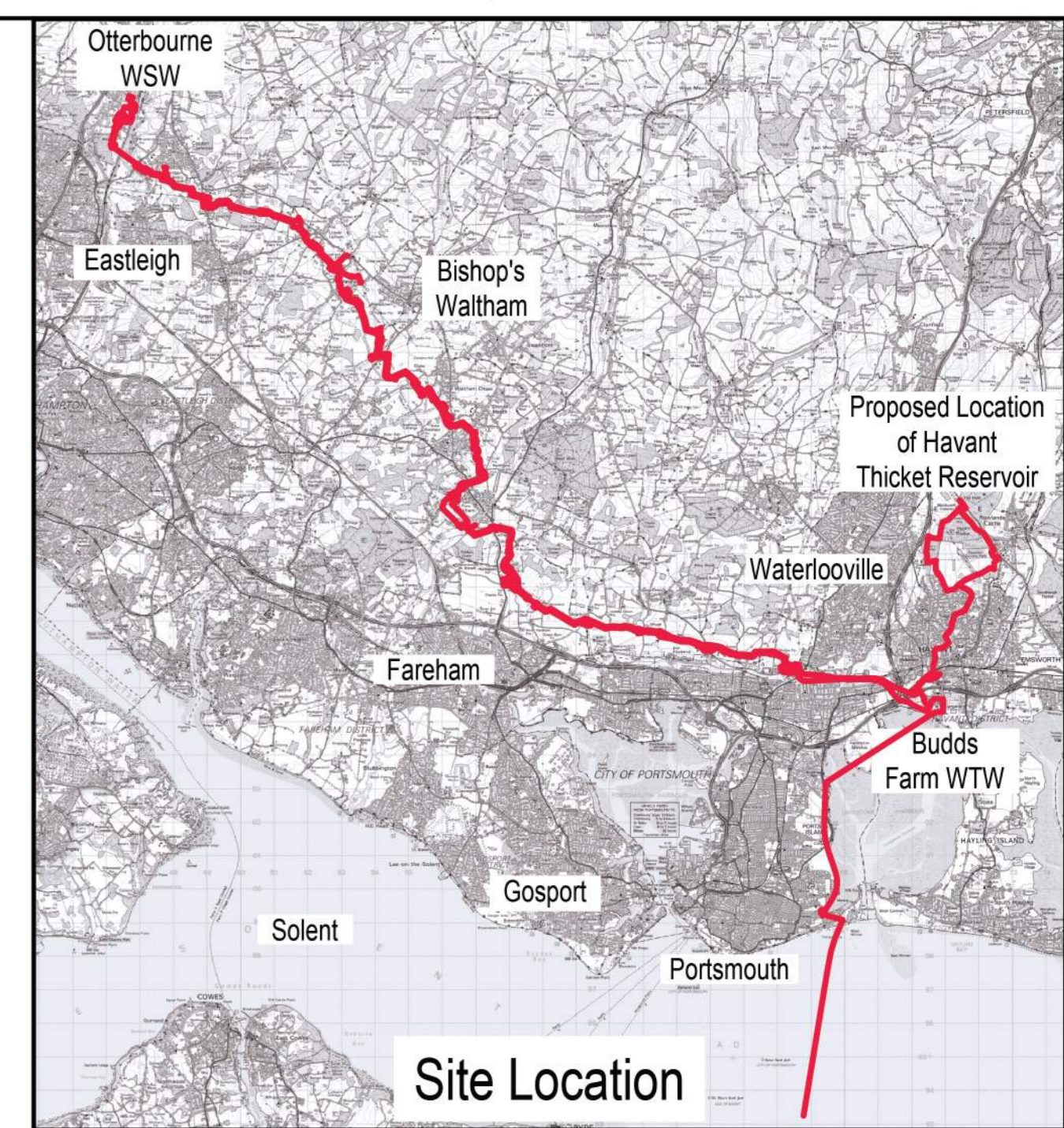
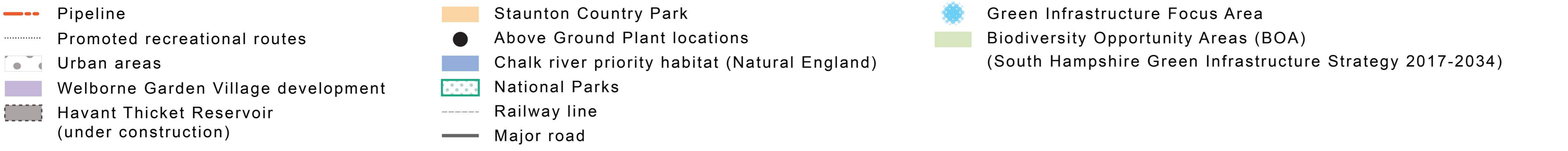
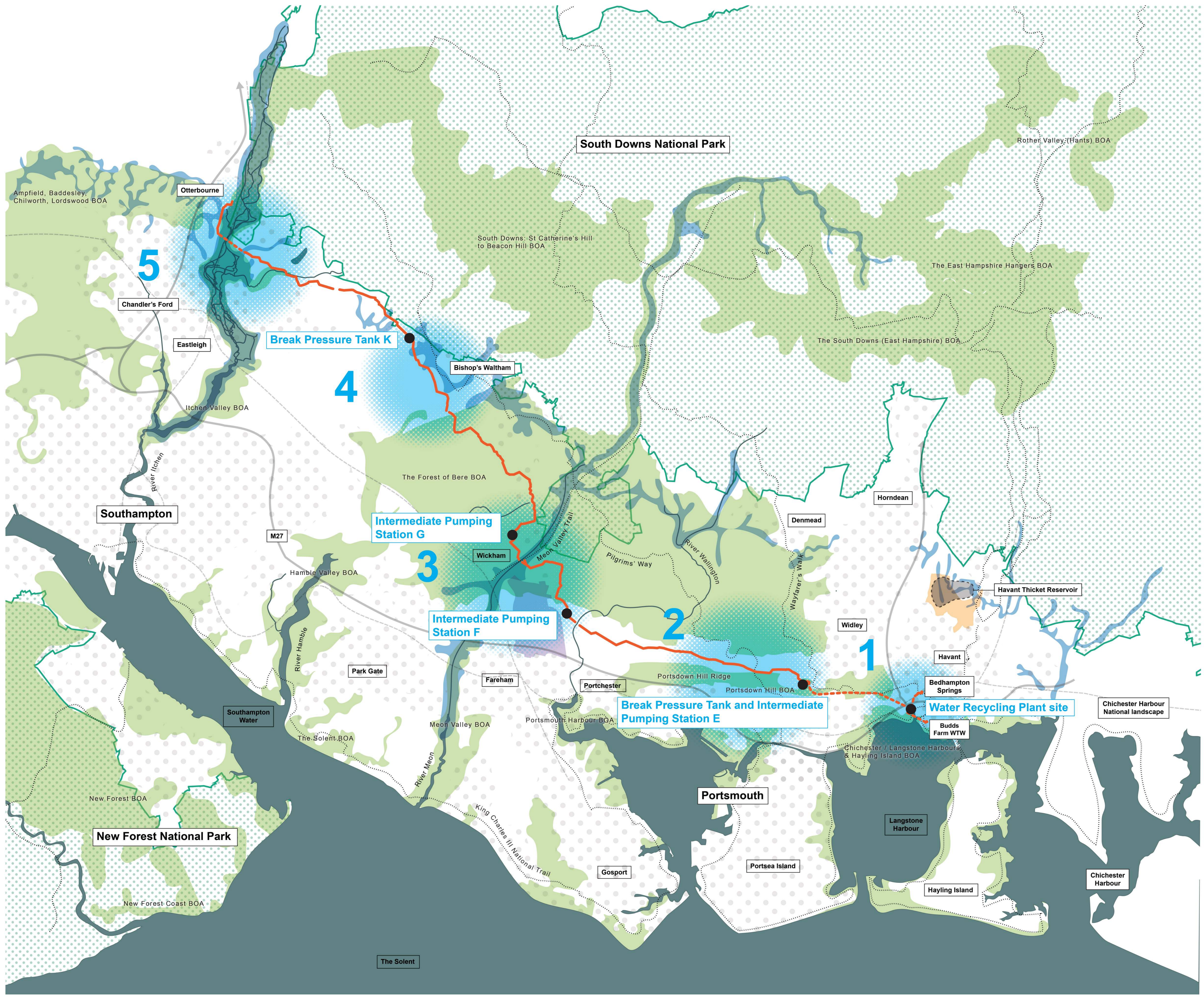


from  
**Southern  
Water.** 

The Southern Water logo graphic consists of three stylized, wavy blue lines of varying lengths, positioned to the right of the text 'Southern Water.'



# Appendix C Indicative Environmental Masterplan (Part 1)



**NOTES**

1. This Indicative Environmental Masterplan was developed at the pre application stage to identify locations for potential enhancement measures that could deliver the greatest positive impacts for the environment, stakeholders and communities. This process included the identification of 'focus areas' predominantly around the AGP sites for the Project, 'except for in one area that explored opportunities around the River Itchen. In developing these focus areas, the Applicant sought to identify and consider local opportunities for delivering environmental enhancement and mitigation. The Indicative Environmental Masterplan is not a secured document and not all of the potential initiatives identified are included within the Project. It demonstrates, however, how potential opportunities for mitigation and enhancement were identified during scheme development.

2. The Indicative Environmental Masterplan should be read in conjunction with the following documents:

- Works plans (Document reference 2.3, DCO Volume 2)
- Design Principles Document (Document reference 5.11, DCO Volume 5)

3. Green Infrastructure Focus Areas:

- Focus Area 1: Broadmarsh Coastal Park - Enhance biodiversity with Open Mosaic habitat creation and improve community access to the Coastal Path with the creation of new green corridors and facilities within the park working with Havant Borough Council.
- Focus Area 2: Portsdown Hill - Protect and enhance the chalk grasslands and Brent Goose habitats and improve pedestrian access to panoramic viewing points.
- Focus Area 3: River Meon and Forest of Bere - Maintain and increase woodland and grassland habitats and explore new connections to the Meon Valley Trail.
- Focus Area 4: River Hamble - Connect recreational routes along the river and improve woodland and grassland habitats in the floodplain.
- Focus Area 5: River Itchen - Protect and enhance riverside habitats whilst improving connectivity to nearby walking and cycling routes.

**Focus Areas**



**1: Broadmarsh Coastal Park**



**2: Portsdown Hill**



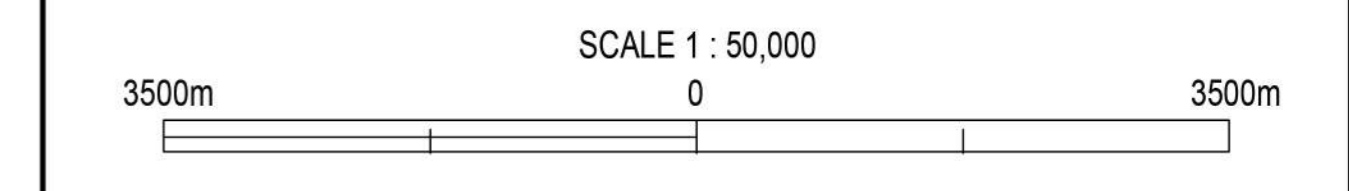
**3: River Meon and Forest of Bere**



**4: River Hamble**



**5: River Itchen**



DATE	ORIG	CHKD	REVD	APPR	REV	STS	REASON FOR ISSUE
28/04/26					P01.5		Draft 5 issue
31/03/26					P01.4		Draft 4 issue
07/12/25					P01.3		Draft 3 issue
15/07/25					P01.2		Draft 2 issue
14/04/25					P01.1		Draft 1 issue

THIS DRAWING IS ISSUED BY SOUTHERN WATER SUBJECT TO THE CONDITIONS THAT IT IS NOT COPIED EITHER IN WHOLE OR IN PART OR DISCLOSED TO THIRD PARTIES UNLESS PRIOR WRITTEN AUTHORISATION IS GIVEN BY SOUTHERN WATER. PREVIOUS VERSIONS OF THIS DRAWING SHOULD BE STAMPED SUPERSEDED OR DESTROYED. DO NOT SCALE THIS DRAWING - IF IN DOUBT ASK.

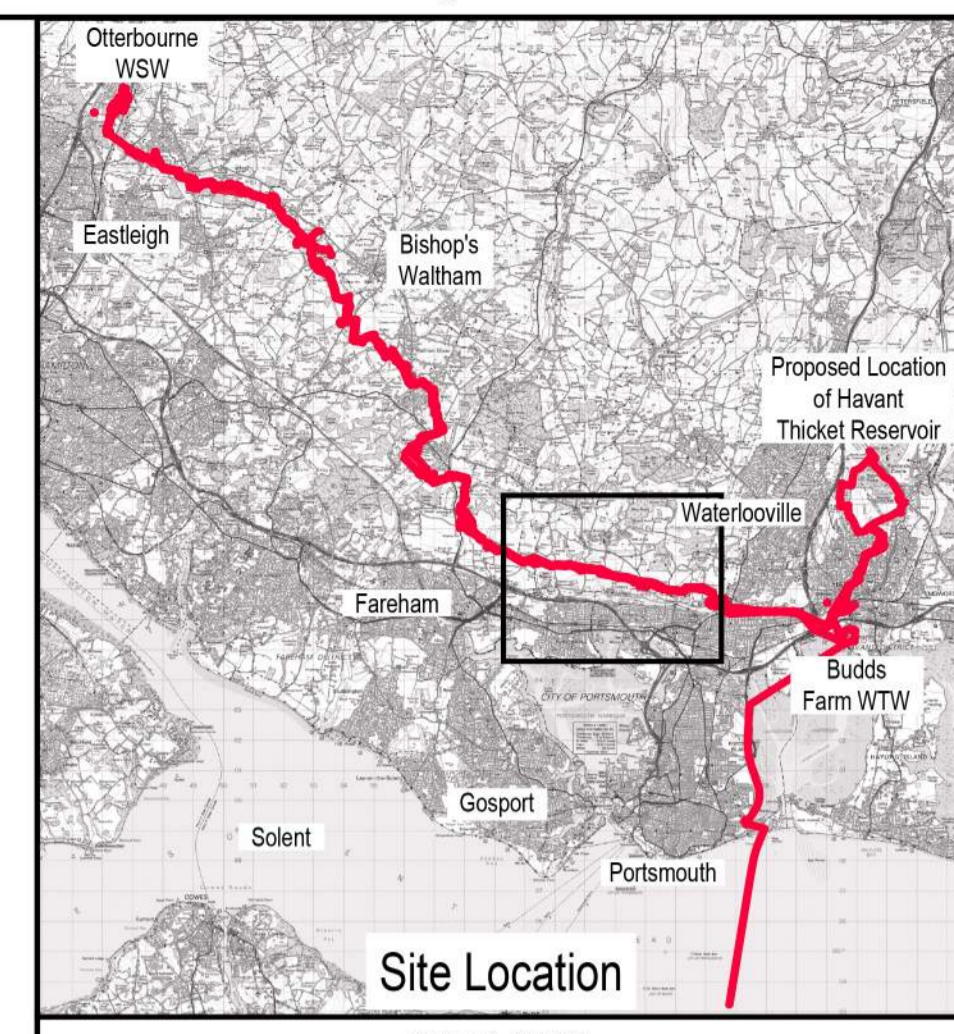
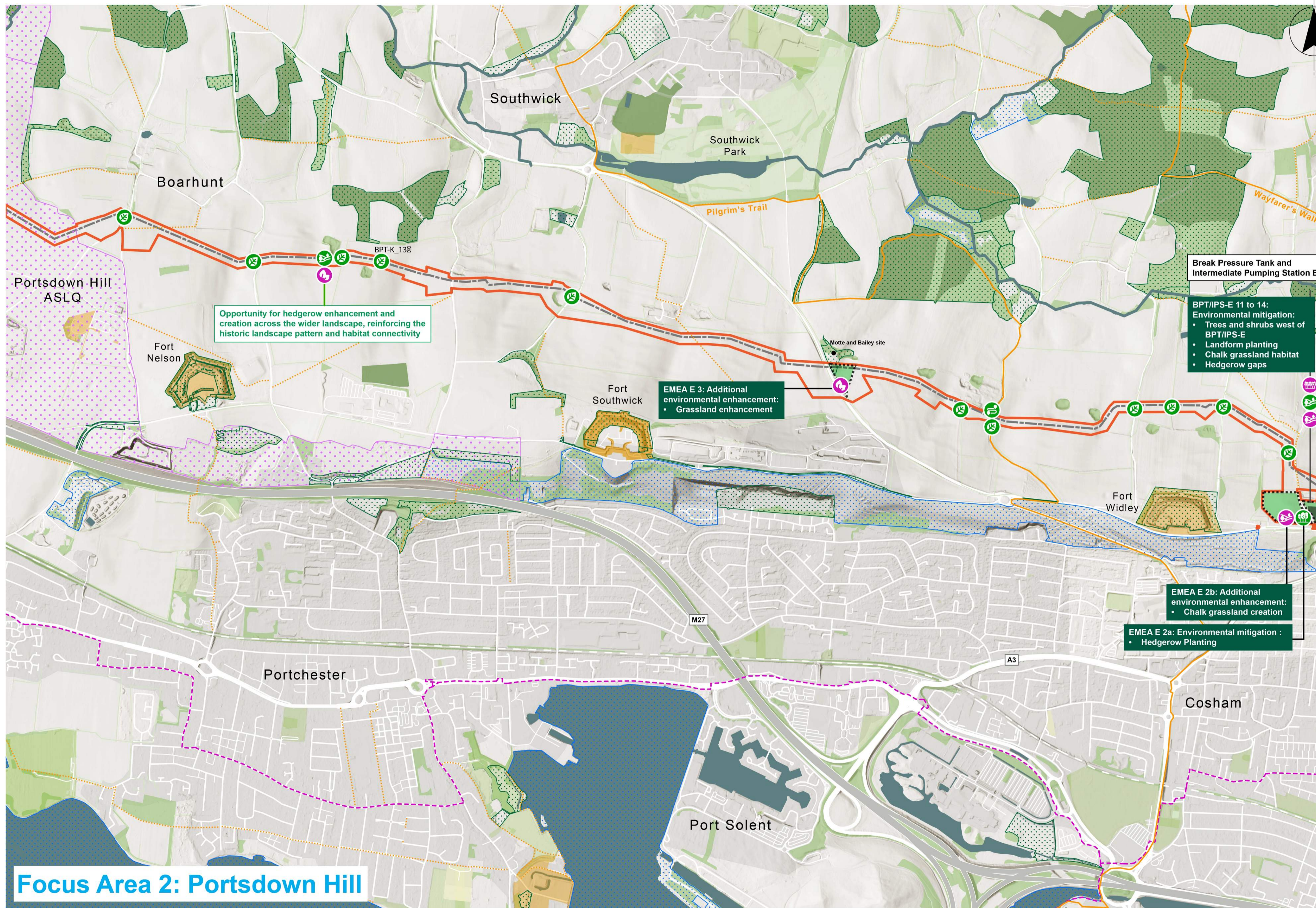
PROJECT TITLE  
**HAMPSHIRE WATER TRANSFER AND WATER RECYCLING PROJECT**

DRAWING TITLE  
**INDICATIVE ENVIRONMENTAL MASTERPLAN: FIGURE 1. INDICATIVE GREEN INFRASTRUCTURE FRAMEWORK**

SHEET 1 of 1

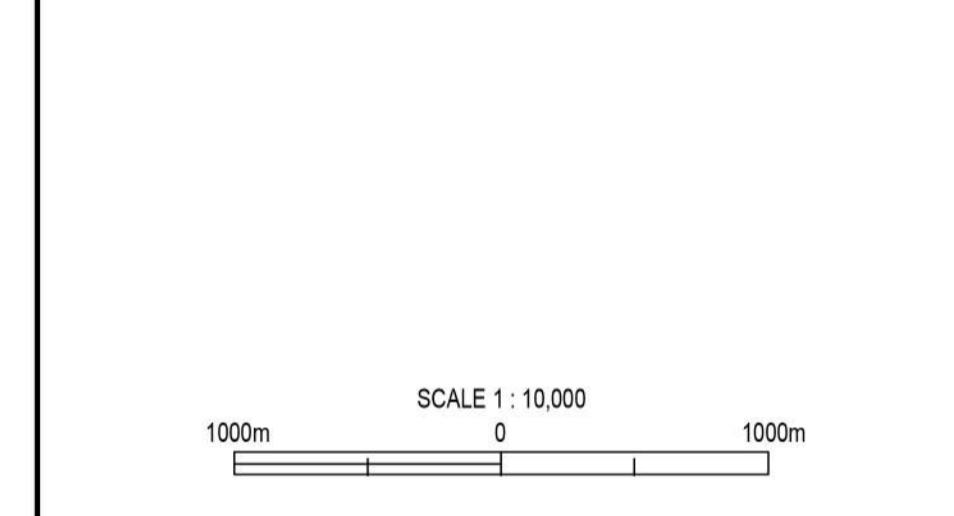
SITE UNIT MEMORIC	SITE UNIT NO.	MASTER SIZE
PRN 710166	SCALE 1:50,000	STATUS
S.W. DRAWING NO.		REVISION <b>P01.5</b>





Site Location  
SCALE 1 : 250,000

- NOTES**
- Locations for Environmental Mitigation and Enhancement Areas (EMEA) are illustrated on the plans by shaded boxes (dark green, light green, pink and blue, as shown in the legend). These are also set out on the Works plans (Document reference 2.3, DCO Volume 2) and in the Design Principles Document (Document reference 5.11, DCO Volume 5).
  - General Design Principles and Site-Specific Design Principles Reference Codes (for example, GDP1) are shown within the shaded boxes. The Design Principles in this plan do not represent all design principles applicable to the area; a full list and further detail on each is provided in Design Principles Document (Document reference 5.11, DCO Volume 5).
  - Local opportunities for delivering environmental enhancement and mitigation are illustrated on the plans by white boxes with coloured outlines.
  - The Indicative Environmental Masterplan is not a secured document and not all of the potential initiatives identified are included within the Project. It demonstrates, however, how potential opportunities for mitigation and enhancement were identified during scheme development.



28/04/26				P01.5	Draft 5 issue	
31/03/26				P01.4	Draft 4 issue	
07/12/25				P01.3	Draft 3 issue	
15/07/25				P01.2	Draft 2 issue	
14/04/25				P01.1	Draft 1 issue	
DATE	CRG	CHD	REVD	APPR	REVS	REASON FOR ISSUE

THIS DRAWING IS ISSUED BY SOUTHERN WATER SUBJECT TO THE CONDITIONS THAT IT IS NOT COPIED EITHER IN WHOLE OR IN PART OR DISCLOSED TO THIRD PARTIES UNLESS PRIOR WRITTEN AUTHORISATION IS GIVEN BY SOUTHERN WATER. PREVIOUS VERSIONS OF THIS DRAWING SHOULD BE STAMPED SUPERSEDED OR DESTROYED. DO NOT SCALE THIS DRAWING - IF IN DOUBT ASK.

from Southern Water.  
Southern House  
Yeoman Road  
Worthing  
West Sussex  
BN13 3NX  
telephone (01903) 264444  
fax (01903) 891435

## Focus Area 2: Portsdown Hill

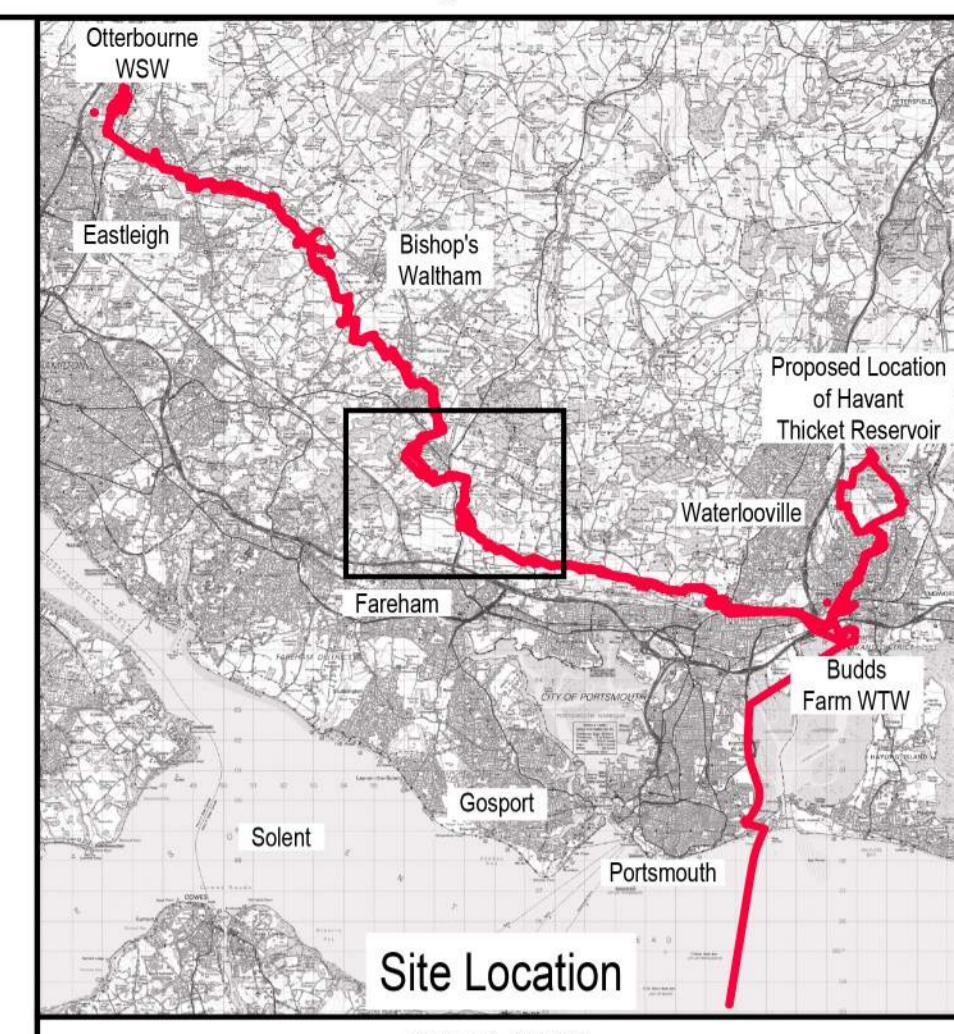
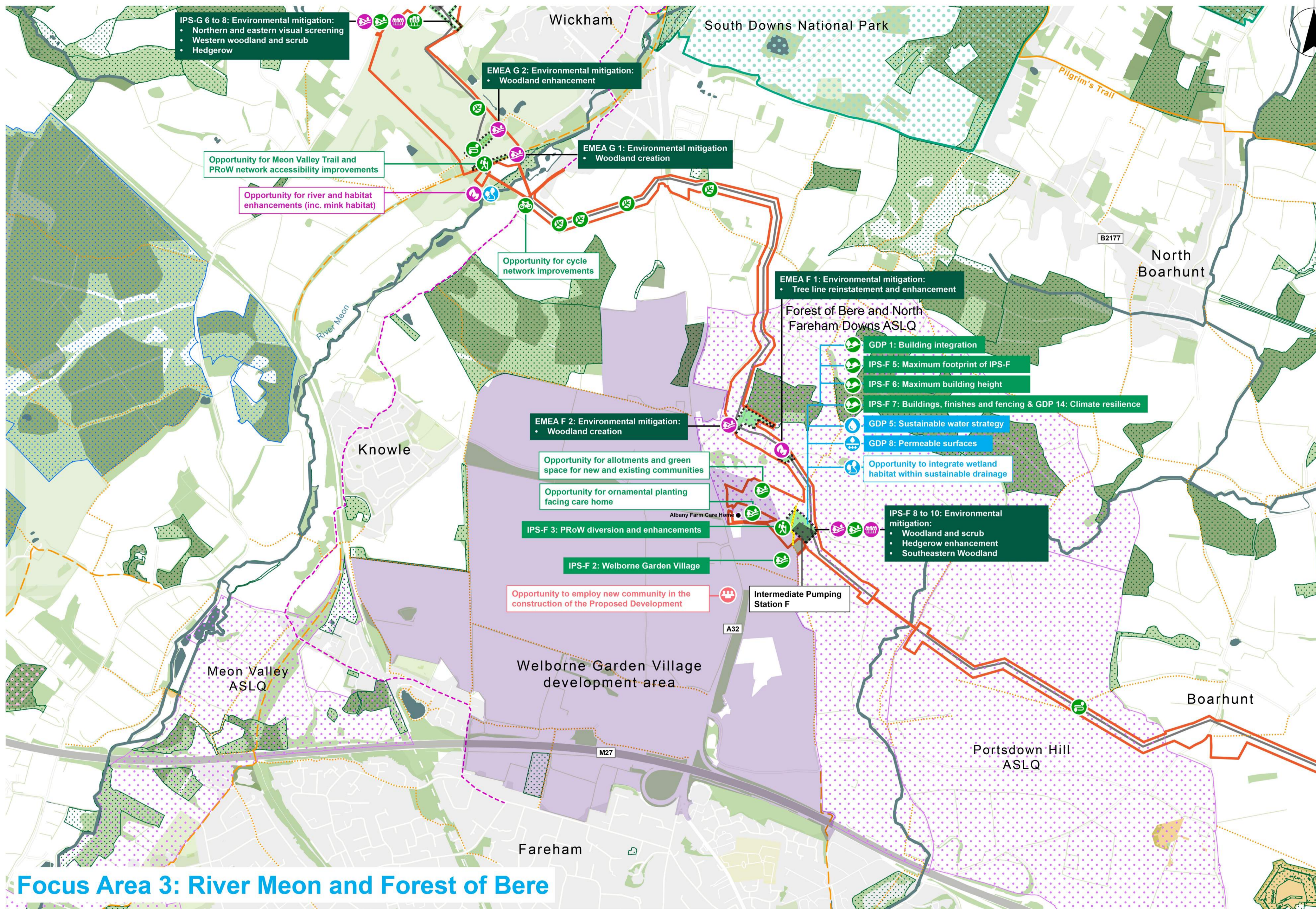
<p><b>Proposed development</b></p> <ul style="list-style-type: none"> <li>Order Limits</li> <li>Indicative Pipeline Location</li> <li>Above Ground Plant and Water Recycling Plant site</li> </ul>	<p><b>Existing features</b></p> <ul style="list-style-type: none"> <li>Long Distance Trails</li> <li>Public Right of Way - footpath</li> <li>Public Right of Way - Bridleway</li> <li>National Cycle Network</li> <li>Watercourse</li> <li>Woodland</li> <li>Ancient Woodland</li> <li>Open space</li> <li>Hedgerow</li> <li>Urban area</li> </ul>	<p><b>Designations</b></p> <ul style="list-style-type: none"> <li>Areas of Special Landscape Quality</li> <li>Scheduled monuments</li> <li>Sites of Special Scientific Interest</li> <li>Special Areas of Conservation</li> <li>Local Nature Reserves</li> <li>Sites of Importance for Nature Conservation</li> </ul>	<p><b>Mitigation and enhancement</b></p> <p><b>Environmental Mitigation and Enhancement Areas (EMEAs)</b></p> <p><b>Landscape</b></p> <p><b>Mitigation</b></p> <ul style="list-style-type: none"> <li>Landscape visual screening</li> <li>Landscape reinstatement planting: GDP 13</li> <li>Landscape Integration planting</li> <li>Building integration</li> <li>PRoW reinstatement</li> </ul>	<p><b>Landscape mitigation cont'd</b></p> <p><b>Footpath improvements</b></p> <ul style="list-style-type: none"> <li>Footpath improvements</li> <li>Green roof and walls</li> </ul> <p><b>Landscape</b></p> <p><b>Enhancement opportunity</b></p> <ul style="list-style-type: none"> <li>Footpath improvements</li> <li>Cycle path improvement</li> <li>Green roof and walls</li> <li>Landscape Integration planting</li> </ul>	<p><b>Ecology</b></p> <p><b>Mitigation</b></p> <ul style="list-style-type: none"> <li>Green/brown roof</li> <li>Habitat creation</li> <li>Habitat enhancement</li> <li>Hedgerow enhancement</li> <li>Bird mitigation</li> </ul> <p><b>Enhancement opportunity</b></p> <ul style="list-style-type: none"> <li>Habitat enhancement</li> <li>Habitat creation</li> <li>Hedgerow enhancement</li> <li>Bird habitat enhancement</li> </ul>	<p><b>Socio-economic</b></p> <p><b>Mitigation</b></p> <ul style="list-style-type: none"> <li>Educational information</li> </ul> <p><b>Enhancement opportunity</b></p> <ul style="list-style-type: none"> <li>Employment opportunities</li> <li>Educational information</li> <li>Facilities improvements</li> <li>Benefits for anglers</li> <li>Visitors Centre</li> </ul>	<p><b>Heritage</b></p> <p><b>Enhancement opportunity</b></p> <ul style="list-style-type: none"> <li>Heritage setting enhancement</li> </ul> <p><b>Water Environment</b></p> <p><b>Mitigation</b></p> <ul style="list-style-type: none"> <li>Sustainable Drainage (SuDS)</li> <li>Permeable surfaces</li> <li>Water environment enhancements</li> </ul> <p><b>Enhancement opportunity</b></p> <ul style="list-style-type: none"> <li>Water environment enhancements</li> </ul>
--	--	---	---	---	---	---	---

PROJECT TITLE  
HAMPSHIRE WATER TRANSFER AND WATER RECYCLING PROJECT

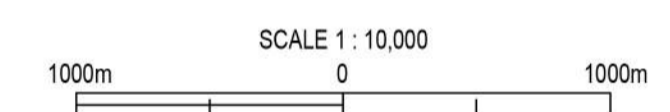
DRAWING TITLE  
INDICATIVE ENVIRONMENTAL MASTERPLAN  
FIGURE 2. INDICATIVE ENVIRONMENTAL MASTERPLANS

SHEET 2 OF 6

SITE UNIT MEMORIC	SITE UNIT NO.	MASTER SIZE
PRN 710166	SCALE 1:10,000	A1
S.W. DRAWING NO.	REVISION	
	P01.5	



- NOTES**
- Locations for Environmental Mitigation and Enhancement Areas (EMEA) are illustrated on the plans by shaded boxes (dark green, light green, pink and blue, as shown in the legend). These are also set out on the Works plans (Document reference 2.3, DCO Volume 2) and in the Design Principles Document (Document reference 5.11, DCO Volume 5).
  - General Design Principles and Site-Specific Design Principles Reference Codes (for example, GDP1) are shown within the shaded boxes. The Design Principles in this plan do not represent all design principles applicable to the area; a full list and further detail on each is provided in Design Principles Document (Document reference 5.11, DCO Volume 5).
  - Local opportunities for delivering environmental enhancement and mitigation are illustrated on the plans by white boxes with coloured outlines.
  - The Indicative Environmental Masterplan is not a secured document and not all of the potential initiatives identified are included within the Project. It demonstrates, however, how potential opportunities for mitigation and enhancement were identified during scheme development.



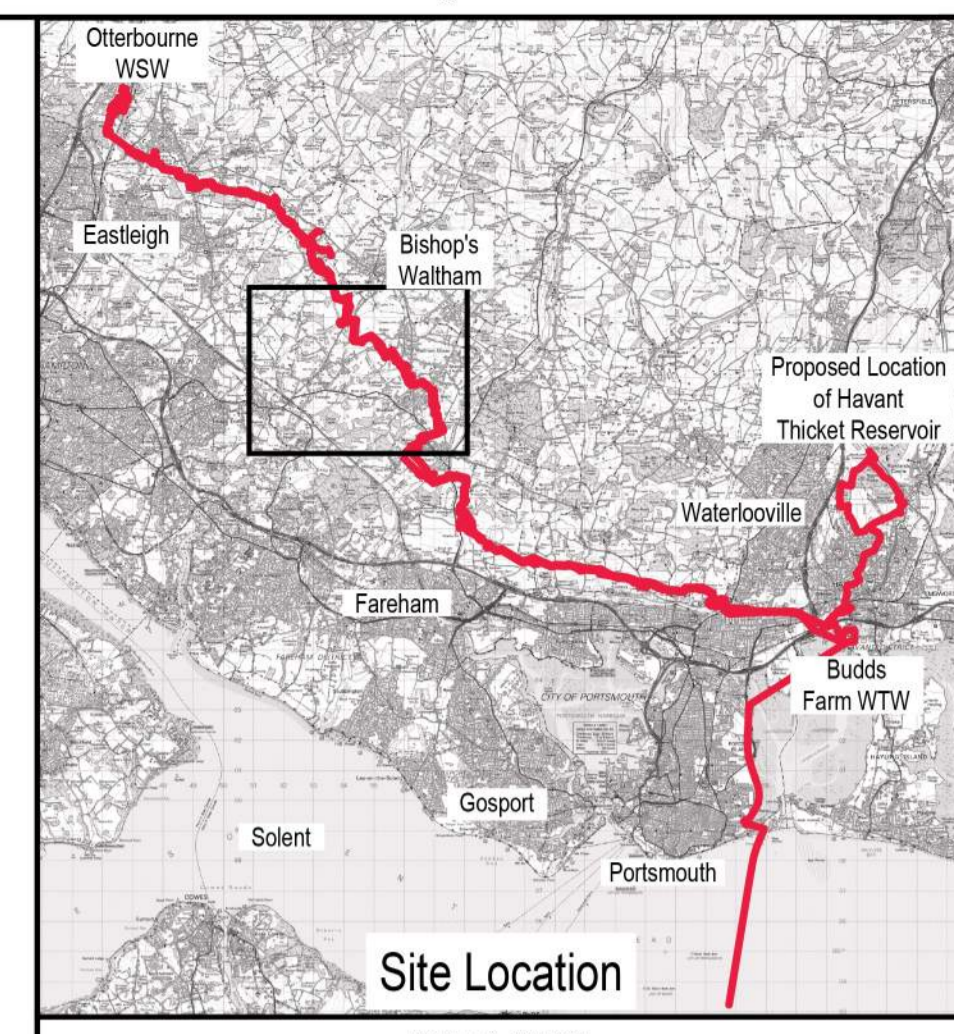
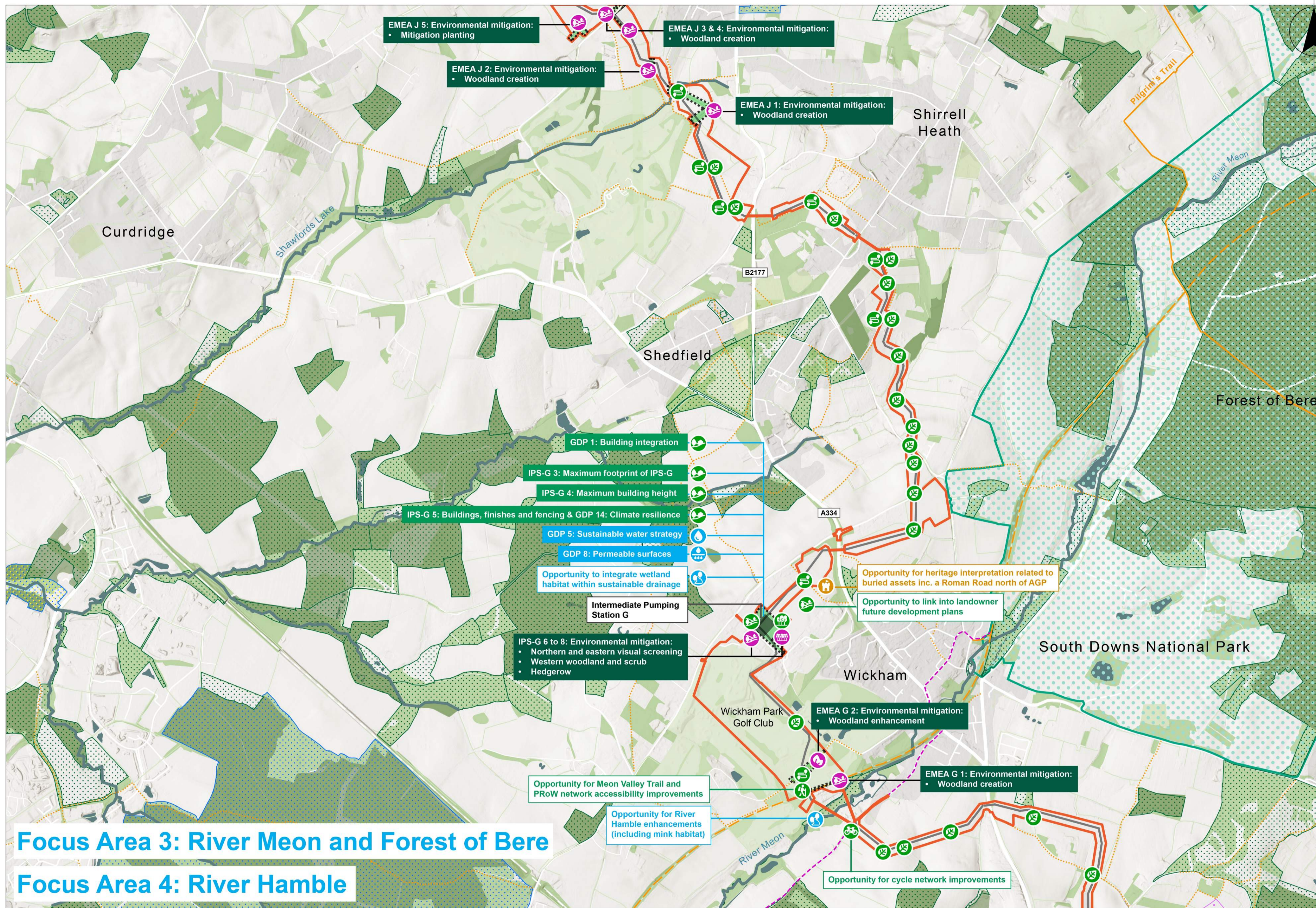
28/04/26						P01.5	Draft 5 issue
31/03/26						P01.4	Draft 4 issue
07/12/25						P01.3	Draft 3 issue
15/07/25						P01.2	Draft 2 issue
14/04/25						P01.1	Draft 1 issue

THIS DRAWING IS ISSUED BY SOUTHERN WATER SUBJECT TO THE CONDITIONS THAT IT IS NOT COPIED EITHER IN WHOLE OR IN PART OR DISCLOSED TO THIRD PARTIES UNLESS PRIOR WRITTEN AUTHORISATION IS GIVEN BY SOUTHERN WATER. PREVIOUS VERSIONS OF THIS DRAWING SHOULD BE STAMPED SUPERSEDED OR DESTROYED. DO NOT SCALE THIS DRAWING - IF IN DOUBT ASK.

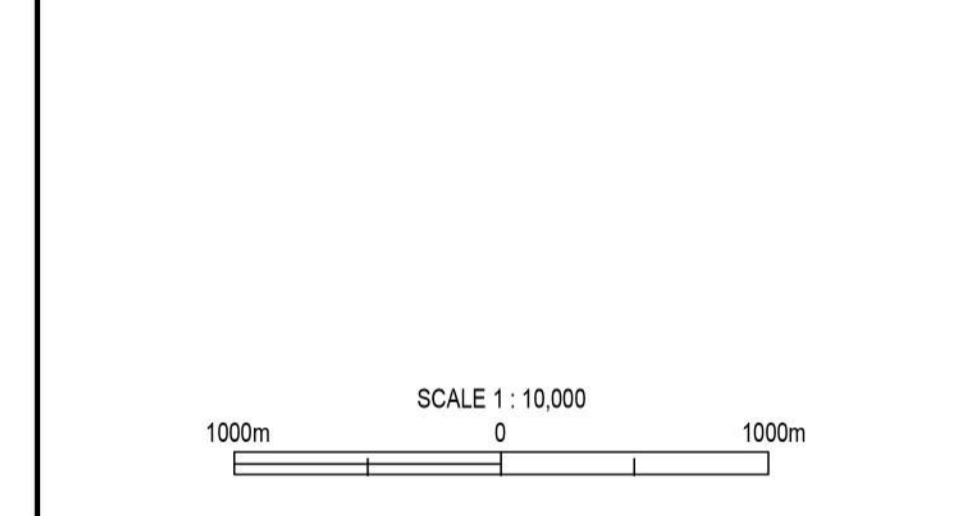
## Focus Area 3: River Meon and Forest of Bere

<p><b>Proposed development</b></p> <ul style="list-style-type: none"> <li>Order Limits</li> <li>Indicative Pipeline Location</li> <li>Above Ground Plant and Water Recycling Plant site</li> </ul>	<p><b>Existing features</b></p> <ul style="list-style-type: none"> <li>Long Distance Trails</li> <li>Public Right of Way - Footpath</li> <li>Public Right of Way - Footpath Diversion</li> <li>Public Right of Way - Bridleway</li> <li>National Cycle Network</li> <li>Watercourse</li> <li>Woodland</li> <li>Ancient Woodland</li> <li>Open space</li> <li>Hedgerow</li> <li>Urban area</li> </ul>	<p><b>Designations</b></p> <ul style="list-style-type: none"> <li>National Parks</li> <li>Areas of Special Landscape Quality</li> <li>Scheduled monuments</li> <li>Sites of Special Scientific Interest</li> <li>Special Areas of Conservation</li> <li>Local Nature Reserves</li> <li>Sites of Importance for Nature Conservation</li> </ul>	<p><b>Mitigation and enhancement</b></p> <p><b>Environmental Mitigation and Enhancement Areas (EMEA)</b></p> <p><b>Landscape</b></p> <p><b>Mitigation</b></p> <ul style="list-style-type: none"> <li>Landscape visual screening</li> <li>Landscape reinstatement planting: GDP 13</li> <li>Landscape Integration planting</li> <li>Building integration</li> <li>PRoW reinstatement</li> </ul>	<p><b>Landscape mitigation cont'd</b></p> <p><b>Footpath improvements</b></p> <ul style="list-style-type: none"> <li>Footpath improvements</li> <li>Green roof and walls</li> </ul> <p><b>Landscape</b></p> <p><b>Enhancement opportunity</b></p> <ul style="list-style-type: none"> <li>Footpath improvements</li> <li>Cycle path improvement</li> <li>Green roof and walls</li> <li>Landscape Integration planting</li> </ul>	<p><b>Ecology</b></p> <p><b>Mitigation</b></p> <ul style="list-style-type: none"> <li>Green/brown roof</li> <li>Habitat creation</li> <li>Habitat enhancement</li> <li>Hedgerow enhancement</li> <li>Bird mitigation</li> </ul> <p><b>Enhancement opportunity</b></p> <ul style="list-style-type: none"> <li>Habitat enhancement</li> <li>Habitat creation</li> <li>Hedgerow enhancement</li> <li>Bird habitat enhancement</li> </ul>	<p><b>Socio-economic</b></p> <p><b>Mitigation</b></p> <ul style="list-style-type: none"> <li>Educational information</li> </ul> <p><b>Enhancement opportunity</b></p> <ul style="list-style-type: none"> <li>Employment opportunities</li> <li>Educational information</li> <li>Facilities improvements</li> <li>Benefits for anglers</li> <li>Visitors Centre</li> </ul>	<p><b>Heritage</b></p> <p><b>Enhancement opportunity</b></p> <ul style="list-style-type: none"> <li>Heritage setting enhancement</li> </ul> <p><b>Water Environment</b></p> <p><b>Mitigation</b></p> <ul style="list-style-type: none"> <li>Sustainable Drainage (SuDS)</li> <li>Permeable surfaces</li> <li>Water environment enhancements</li> </ul> <p><b>Enhancement opportunity</b></p> <ul style="list-style-type: none"> <li>Water environment enhancements</li> </ul>
--	--	---	--	---	---	---	---

PROJECT TITLE		
HAMPSHIRE WATER TRANSFER AND WATER RECYCLING PROJECT		
DRAWING TITLE		
INDICATIVE ENVIRONMENTAL MASTERPLAN FIGURE 2. INDICATIVE ENVIRONMENTAL MASTERPLANS		
SHEET 3 OF 6		
SITE UNIT MEMORIC	SITE UNIT NO.	MASTER SIZE
PRN 710166	SCALE 1:10,000	A1
S.W. DRAWING NO.	REVISION	
	P01.5	



- NOTES**
- Locations for Environmental Mitigation and Enhancement Areas (EMEA) are illustrated on the plans by shaded boxes (dark green, light green, pink and blue, as shown in the legend). These are also set out on the Works plans (Document reference 2.3, DCO Volume 2) and in the Design Principles Document (Document reference 5.11, DCO Volume 5).
  - General Design Principles and Site-Specific Design Principles Reference Codes (for example, GDP1) are shown within the shaded boxes. The Design Principles in this plan do not represent all design principles applicable to the area; a full list and further detail on each is provided in Design Principles Document (Document reference 5.11, DCO Volume 5).
  - Local opportunities for delivering environmental enhancement and mitigation are illustrated on the plans by white boxes with coloured outlines.
  - The Indicative Environmental Masterplan is not a secured document and not all of the potential initiatives identified are included within the Project. It demonstrates, however, how potential opportunities for mitigation and enhancement were identified during scheme development.



DATE	ORIG	CHKD	REVD	APPR	REV	STS	REASON FOR ISSUE
28/04/26					P01.5		Draft 5 issue
31/03/26					P01.4		Draft 4 issue
07/12/25					P01.3		Draft 3 issue
15/07/25					P01.2		Draft 2 issue
14/04/25					P01.1		Draft 1 issue

THIS DRAWING IS ISSUED BY SOUTHERN WATER SUBJECT TO THE CONDITIONS THAT IT IS NOT COPIED EITHER IN WHOLE OR IN PART OR DISCLOSED TO THIRD PARTIES UNLESS PRIOR WRITTEN AUTHORISATION IS GIVEN BY SOUTHERN WATER. PREVIOUS VERSIONS OF THIS DRAWING SHOULD BE STAMPED SUPERSEDED OR DESTROYED. DO NOT SCALE THIS DRAWING - IF IN DOUBT ASK.

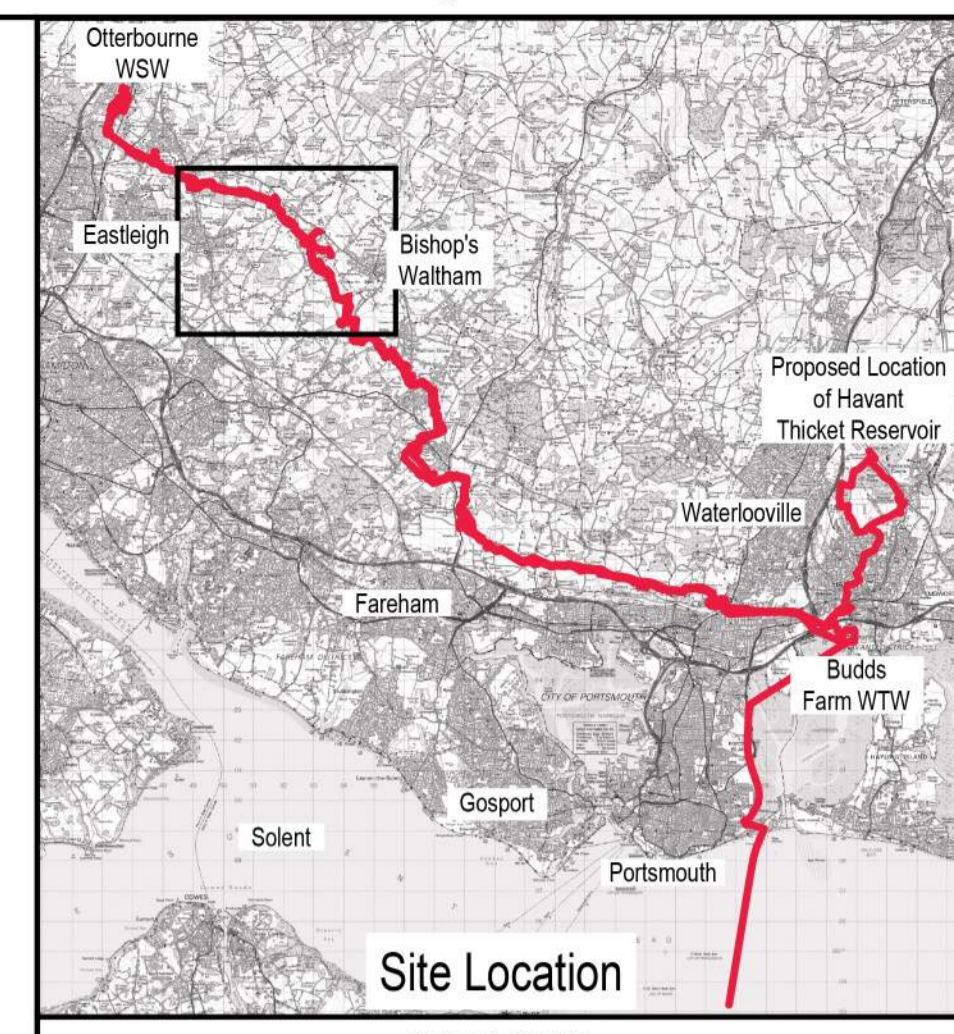
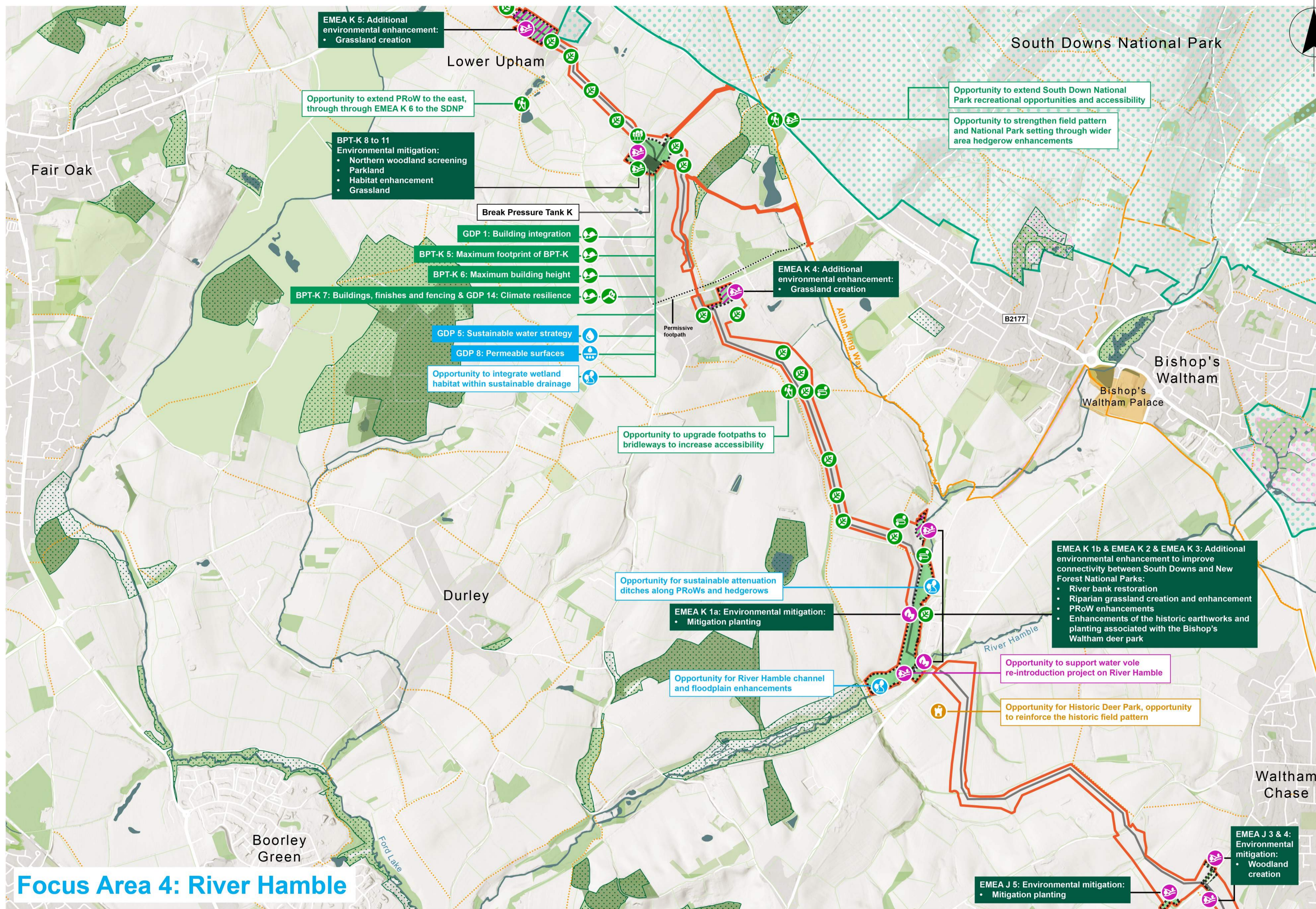
PROJECT TITLE  
**HAMPSHIRE WATER TRANSFER AND WATER RECYCLING PROJECT**

DRAWING TITLE  
**INDICATIVE ENVIRONMENTAL MASTERPLAN  
 FIGURE 2. INDICATIVE ENVIRONMENTAL MASTERPLANS**

SHEET 4 OF 6

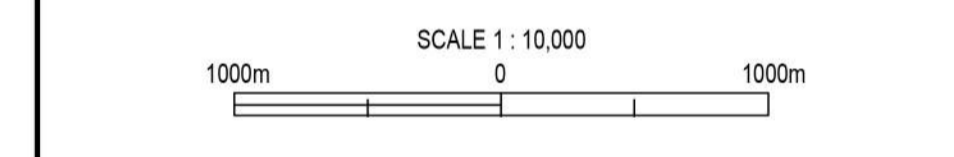
SITE UNIT MEMORIC	SITE UNIT NO.	MASTER SIZE
PRN 710166	SCALE 1:10,000	A1
S.W. DRAWING NO.	REVISION	
	P01.5	

<p><b>Proposed development</b></p> <ul style="list-style-type: none"> <li>Order Limits</li> <li>Indicative Pipeline Location</li> <li>Above Ground Plant and Water Recycling Plant site</li> </ul>	<p><b>Existing features</b></p> <ul style="list-style-type: none"> <li>Long Distance Trails</li> <li>Public Right of Way - Footpath</li> <li>Public Right of Way - Bridleway</li> <li>National Cycle Network</li> <li>Watercourse</li> <li>Woodland</li> <li>Ancient Woodland</li> <li>Open space</li> <li>Hedgerow</li> <li>Urban area</li> </ul>	<p><b>Designations</b></p> <ul style="list-style-type: none"> <li>National Parks</li> <li>Scheduled monuments</li> <li>Sites of Special Scientific Interest</li> <li>Special Areas of Conservation</li> <li>Local Nature Reserves</li> <li>Sites of Importance for Nature Conservation</li> </ul>	<p><b>Mitigation and enhancement</b></p> <p><b>Environmental Mitigation and Enhancement Areas (EMEAs)</b></p> <p><b>Landscape</b></p> <p><b>Mitigation</b></p> <ul style="list-style-type: none"> <li>Landscape visual screening</li> <li>Landscape reinstatement planting: GDP 13</li> <li>Landscape Integration planting</li> <li>Building integration</li> <li>PRoW reinstatement</li> </ul>	<p><b>Landscape mitigation cont'd</b></p> <p><b>Footpath improvements</b></p> <ul style="list-style-type: none"> <li>Footpath improvements</li> <li>Green roof and walls</li> </ul> <p><b>Landscape</b></p> <p><b>Enhancement opportunity</b></p> <ul style="list-style-type: none"> <li>Footpath improvements</li> <li>Cycle path improvement</li> <li>Green roof and walls</li> <li>Landscape Integration planting</li> </ul>	<p><b>Ecology</b></p> <p><b>Mitigation</b></p> <ul style="list-style-type: none"> <li>Green/brown roof</li> <li>Habitat creation</li> <li>Habitat enhancement</li> <li>Hedgerow enhancement</li> <li>Bird mitigation</li> </ul> <p><b>Enhancement opportunity</b></p> <ul style="list-style-type: none"> <li>Habitat enhancement</li> <li>Habitat creation</li> <li>Hedgerow enhancement</li> <li>Bird habitat enhancement</li> </ul>	<p><b>Socio-economic</b></p> <p><b>Mitigation</b></p> <ul style="list-style-type: none"> <li>Educational information</li> </ul> <p><b>Enhancement opportunity</b></p> <ul style="list-style-type: none"> <li>Employment opportunities</li> <li>Educational information</li> <li>Facilities improvements</li> <li>Benefits for anglers</li> <li>Visitors Centre</li> </ul>	<p><b>Heritage</b></p> <p><b>Enhancement opportunity</b></p> <ul style="list-style-type: none"> <li>Heritage setting enhancement</li> </ul> <p><b>Water Environment</b></p> <p><b>Mitigation</b></p> <ul style="list-style-type: none"> <li>Sustainable Drainage (SuDS)</li> <li>Permeable surfaces</li> </ul> <p><b>Enhancement opportunity</b></p> <ul style="list-style-type: none"> <li>Water environment enhancements</li> <li>Water environment enhancements</li> </ul>
--	--	---	---	---	---	---	---



SCALE 1 : 250,000

- NOTES**
- Locations for Environmental Mitigation and Enhancement Areas (EMEAs) are illustrated on the plans by shaded boxes (dark green, light green, pink and blue, as shown in the legend). These are also set out on the Works plans (Document reference 2.3, DCO Volume 2) and in the Design Principles Document (Document reference 5.11, DCO Volume 5).
  - General Design Principles and Site-Specific Design Principles Reference Codes (for example, GDP1) are shown within the shaded boxes. The Design Principles in this plan do not represent all design principles applicable to the area; a full list and further detail on each is provided in Design Principles Document (Document reference 5.11, DCO Volume 5).
  - Local opportunities for delivering environmental enhancement and mitigation are illustrated on the plans by white boxes with coloured outlines.
  - The Indicative Environmental Masterplan is not a secured document and not all of the potential initiatives identified are included within the Project. It demonstrates, however, how potential opportunities for mitigation and enhancement were identified during scheme development.



28/04/26					P01.5	Draft 5 issue
31/03/26					P01.4	Draft 4 issue
07/12/25					P01.3	Draft 3 issue
15/07/25					P01.2	Draft 2 issue
14/04/25					P01.1	Draft 1 issue
DATE	ORIG	CHD	REVD	APPR	REV	REASON FOR ISSUE

THIS DRAWING IS ISSUED BY SOUTHERN WATER SUBJECT TO THE CONDITIONS THAT IT IS NOT COPIED EITHER IN WHOLE OR IN PART OR DISCLOSED TO THIRD PARTIES UNLESS PRIOR WRITTEN AUTHORISATION IS GIVEN BY SOUTHERN WATER. PREVIOUS VERSIONS OF THIS DRAWING SHOULD BE STAMPED SUPERSEDED OR DESTROYED. DO NOT SCALE THIS DRAWING - IF IN DOUBT ASK.

Southern House  
Yeoman Road  
Worthing  
West Sussex  
BN13 3NX  
telephone (01903) 264444  
fax (01903) 891435

PROJECT TITLE  
**HAMPSHIRE WATER TRANSFER AND WATER RECYCLING PROJECT**

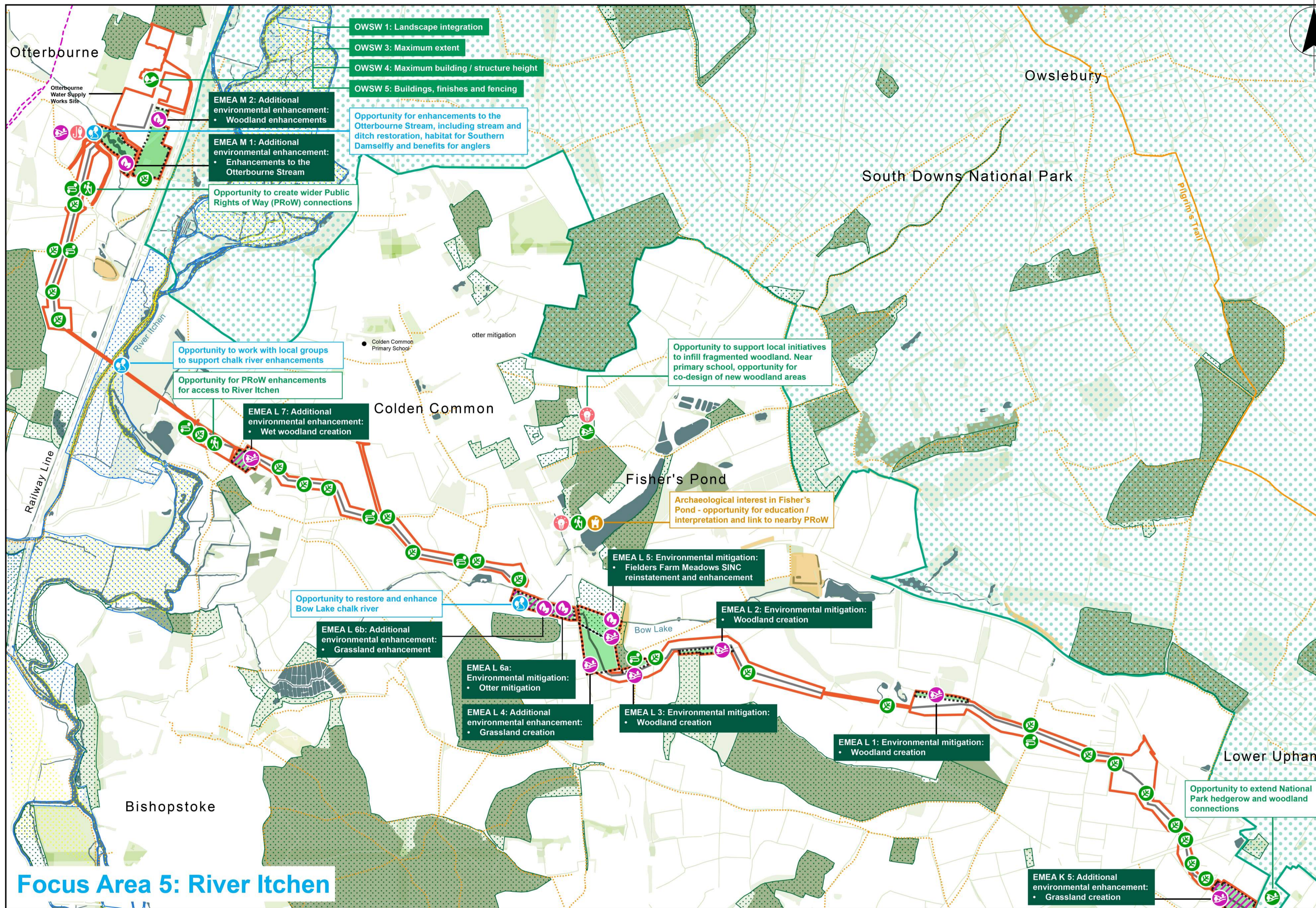
DRAWING TITLE  
**INDICATIVE ENVIRONMENTAL MASTERPLAN  
FIGURE 2. INDICATIVE ENVIRONMENTAL MASTERPLANS**

SHEET 5 OF 6

SITE UNIT MEMORIC	SITE UNIT NO.	MASTER SIZE
PRN 710166	SCALE 1:10,000	A1
S.W. DRAWING NO.	REVISION	
	P01.5	

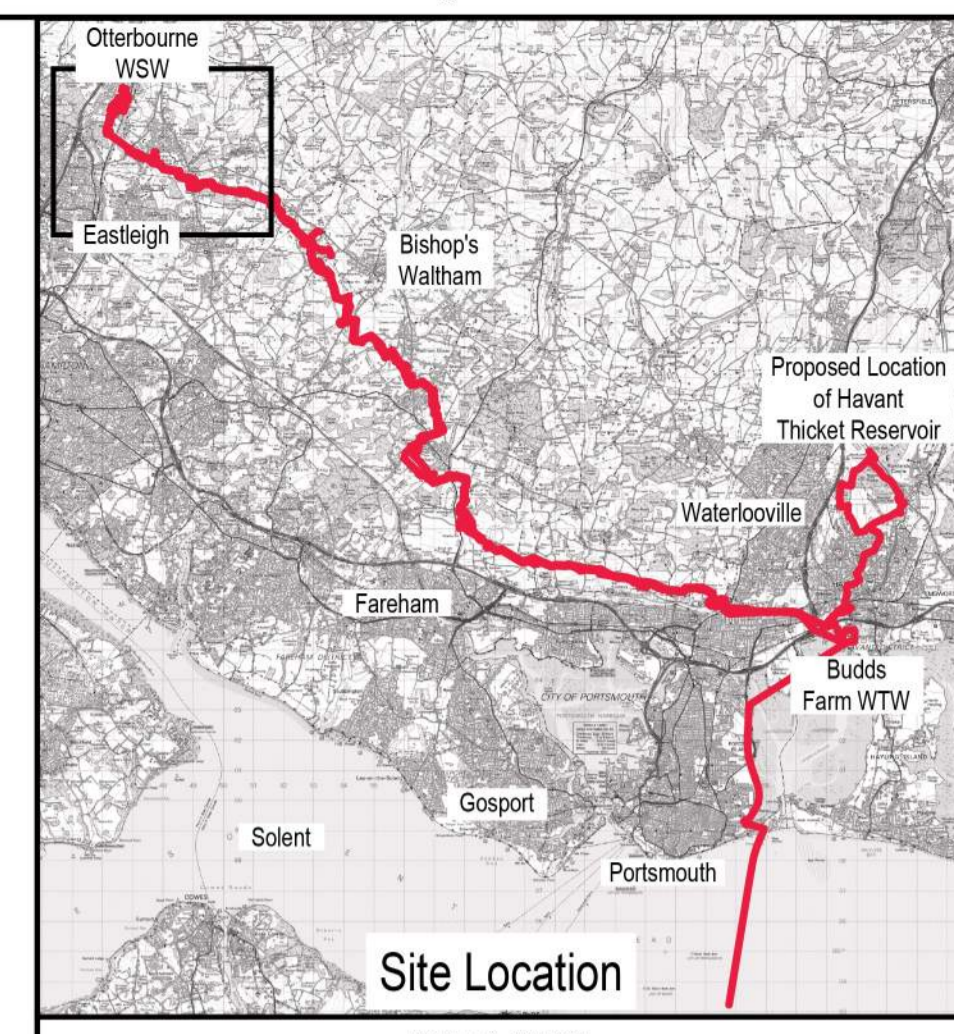
**Focus Area 4: River Hamble**

<p><b>Proposed development</b></p> <ul style="list-style-type: none"> <li>Order Limits</li> <li>Indicative Pipeline Location</li> <li>Above Ground Plant and Water Recycling Plant site</li> </ul>	<p><b>Existing features</b></p> <ul style="list-style-type: none"> <li>Long Distance Trails</li> <li>Public Right of Way - Footpath</li> <li>Public Right of Way - Bridleway</li> <li>National Cycle Network</li> <li>Watercourse</li> <li>Woodland</li> <li>Ancient Woodland</li> <li>Open space</li> <li>Hedgerow</li> <li>Urban area</li> </ul>	<p><b>Designations</b></p> <ul style="list-style-type: none"> <li>National Parks</li> <li>Scheduled monuments</li> <li>Sites of Special Scientific Interest</li> <li>Special Areas of Conservation</li> <li>Local Nature Reserves</li> <li>Sites of Importance for Nature Conservation</li> </ul>	<p><b>Mitigation and enhancement</b></p> <p><b>Environmental Mitigation and Enhancement Areas (EMEAs)</b></p> <p><b>Landscape</b></p> <p><b>Mitigation</b></p> <ul style="list-style-type: none"> <li>Landscape visual screening</li> <li>Landscape reinstatement planting: GDP 13</li> <li>Landscape Integration planting</li> <li>Building integration</li> <li>PRoW reinstatement</li> </ul>	<p><b>Landscape mitigation cont'd</b></p> <p><b>Footpath improvements</b></p> <ul style="list-style-type: none"> <li>Footpath improvements</li> <li>Green roof and walls</li> </ul> <p><b>Landscape</b></p> <p><b>Enhancement opportunity</b></p> <ul style="list-style-type: none"> <li>Footpath improvements</li> <li>Cycle path improvement</li> <li>Green roof and walls</li> <li>Landscape Integration planting</li> </ul>	<p><b>Ecology</b></p> <p><b>Mitigation</b></p> <ul style="list-style-type: none"> <li>Green/brown roof</li> <li>Habitat creation</li> <li>Habitat enhancement</li> <li>Hedgerow enhancement</li> <li>Bird mitigation</li> </ul> <p><b>Enhancement opportunity</b></p> <ul style="list-style-type: none"> <li>Habitat enhancement</li> <li>Habitat creation</li> <li>Hedgerow enhancement</li> <li>Bird habitat enhancement</li> </ul>	<p><b>Socio-economic</b></p> <p><b>Mitigation</b></p> <ul style="list-style-type: none"> <li>Educational information</li> </ul> <p><b>Enhancement opportunity</b></p> <ul style="list-style-type: none"> <li>Employment opportunities</li> <li>Educational information</li> <li>Facilities improvements</li> <li>Benefits for anglers</li> <li>Visitors Centre</li> </ul> <p><b>Biodiversity Net Gain</b></p> <ul style="list-style-type: none"> <li>Biodiversity net gain (BNG) area</li> </ul>	<p><b>Heritage</b></p> <p><b>Enhancement opportunity</b></p> <ul style="list-style-type: none"> <li>Heritage setting enhancement</li> </ul> <p><b>Water Environment</b></p> <p><b>Mitigation</b></p> <ul style="list-style-type: none"> <li>Sustainable Drainage (SuDS)</li> <li>Permeable surfaces</li> <li>Water environment enhancements</li> </ul> <p><b>Enhancement opportunity</b></p> <ul style="list-style-type: none"> <li>Water environment enhancements</li> </ul>
--	--	---	---	---	---	--	---



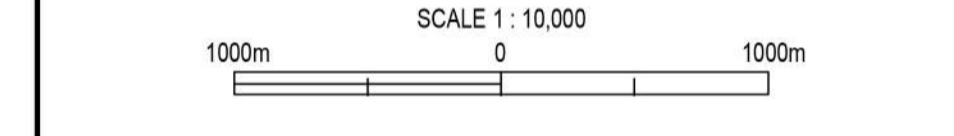
### Focus Area 5: River Itchen

<p><b>Proposed development</b></p> <ul style="list-style-type: none"> <li>Order Limits</li> <li>Indicative Pipeline Location</li> <li>Above Ground Plant and Water Recycling Plant site</li> </ul>	<p><b>Existing features</b></p> <ul style="list-style-type: none"> <li>Long Distance Trails</li> <li>Public Right of Way - Footpath</li> <li>Public Right of Way - Bridleway</li> <li>National Cycle Network</li> <li>Watercourse</li> <li>Woodland</li> <li>Ancient Woodland</li> <li>Open space</li> <li>Hedgerow</li> <li>Urban area</li> </ul>	<p><b>Designations</b></p> <ul style="list-style-type: none"> <li>National Parks</li> <li>Scheduled monuments</li> <li>Sites of Special Scientific Interest</li> <li>Special Areas of Conservation</li> <li>Local Nature Reserves</li> <li>Sites of Importance for Nature Conservation</li> </ul>	<p><b>Mitigation and enhancement</b></p> <p><b>Environmental Mitigation and Enhancement Areas (EMEAs)</b></p> <p><b>Landscape</b></p> <p><b>Mitigation</b></p> <ul style="list-style-type: none"> <li>Landscape visual screening</li> <li>Landscape reinstatement planting: GDP 13</li> <li>Landscape Integration planting</li> <li>Building integration</li> <li>PRoW reinstatement</li> </ul>	<p><b>Landscape mitigation cont'd</b></p> <p><b>Landscape</b></p> <ul style="list-style-type: none"> <li>Footpath improvements</li> <li>Green roof and walls</li> </ul> <p><b>Enhancement opportunity</b></p> <ul style="list-style-type: none"> <li>Footpath improvements</li> <li>Cycle path improvement</li> <li>Green roof and walls</li> <li>Landscape Integration planting</li> </ul>	<p><b>Ecology</b></p> <p><b>Mitigation</b></p> <ul style="list-style-type: none"> <li>Green/brown roof</li> <li>Habitat creation</li> <li>Habitat enhancement</li> <li>Hedgerow enhancement</li> <li>Bird mitigation</li> </ul> <p><b>Enhancement opportunity</b></p> <ul style="list-style-type: none"> <li>Habitat enhancement</li> <li>Habitat creation</li> <li>Hedgerow enhancement</li> <li>Bird habitat enhancement</li> </ul>	<p><b>Socio-economic</b></p> <p><b>Mitigation</b></p> <ul style="list-style-type: none"> <li>Educational information</li> </ul> <p><b>Enhancement opportunity</b></p> <ul style="list-style-type: none"> <li>Employment opportunities</li> <li>Educational information</li> <li>Facilities improvements</li> <li>Benefits for anglers</li> <li>Visitors Centre</li> </ul> <p><b>Biodiversity Net Gain</b></p> <ul style="list-style-type: none"> <li>Biodiversity net gain (BNG) area</li> </ul>	<p><b>Heritage</b></p> <p><b>Enhancement opportunity</b></p> <ul style="list-style-type: none"> <li>Heritage setting enhancement</li> </ul> <p><b>Water Environment</b></p> <p><b>Mitigation</b></p> <ul style="list-style-type: none"> <li>Sustainable Drainage (SuDS)</li> <li>Permeable surfaces</li> </ul> <p><b>Enhancement opportunity</b></p> <ul style="list-style-type: none"> <li>Water environment enhancements</li> <li>Water environment enhancements</li> </ul>
--	--	---	---	---	---	--	---



Site Location  
SCALE 1: 250,000

- NOTES**
- Locations for Environmental Mitigation and Enhancement Areas (EMEAs) are illustrated on the plans by shaded boxes (dark green, light green, pink and blue, as shown in the legend). These are also set out on the Works plans (Document reference 2.3, DCO Volume 2) and in the Design Principles Document (Document reference 5.11, DCO Volume 5).
  - General Design Principles and Site-Specific Design Principles Reference Codes (for example, GDP1) are shown within the shaded boxes. The Design Principles in this plan do not represent all design principles applicable to the area; a full list and further detail on each is provided in Design Principles Document (Document reference 5.11, DCO Volume 5).
  - Local opportunities for delivering environmental enhancement and mitigation are illustrated on the plans by white boxes with coloured outlines.
  - The Indicative Environmental Masterplan is not a secured document and not all of the potential initiatives identified are included within the Project. It demonstrates, however, how potential opportunities for mitigation and enhancement were identified during scheme development.



DATE	ORIG	CHD	REVD	APPR	REV	STS	REASON FOR ISSUE
28/04/26					P01.5		Draft 5 issue
31/03/26					P01.4		Draft 4 issue
07/12/25					P01.3		Draft 3 issue
15/07/25					P01.2		Draft 2 issue
14/04/25					P01.1		Draft 1 issue

THIS DRAWING IS ISSUED BY SOUTHERN WATER SUBJECT TO THE CONDITIONS THAT IT IS NOT COPIED EITHER IN WHOLE OR IN PART OR DISCLOSED TO THIRD PARTIES UNLESS PRIOR WRITTEN AUTHORISATION IS GIVEN BY SOUTHERN WATER

Southern House  
Yeoman Road  
Worthing  
Sussex  
BN13 3NX  
telephone (01903) 264444  
fax (01903) 891435

PROJECT TITLE  
**HAMPSHIRE WATER TRANSFER AND WATER RECYCLING PROJECT**

DRAWING TITLE  
**INDICATIVE ENVIRONMENTAL MASTERPLAN  
FIGURE 2. INDICATIVE ENVIRONMENTAL MASTERPLANS**

SHEET 6 OF 6

SITE UNIT MEMORIC	SITE UNIT NO.	MASTER SIZE
PRN 710166	SCALE 1:10,000	A1
S.W. DRAWING NO.	REVISION	
	P01.5	



from  
Southern  
Water. 

The Southern Water logo graphic consists of three white, wavy lines of varying lengths, stacked vertically, resembling a stylized wave or water droplet.